



BACKSTAGE SOCIAL NARRATIVE PROJECT ARTS CENTRE

I am an arts worker or an artist working at Project Arts Centre.
This is what I can expect to find backstage.



If I want a tour of the building prior to my visit, I can contact the the Project Potential Coordinator at cathy@projectartscentre.ie in advance of my production or exhibition. I can also contact box office staff and they will assist me in coordinating my access requirements.

Phone 01 881 9604
www.projectartscentre.ie

A social narrative of the public spaces can be found [HERE](#)

PAGE 1

SECURITY DOORS:

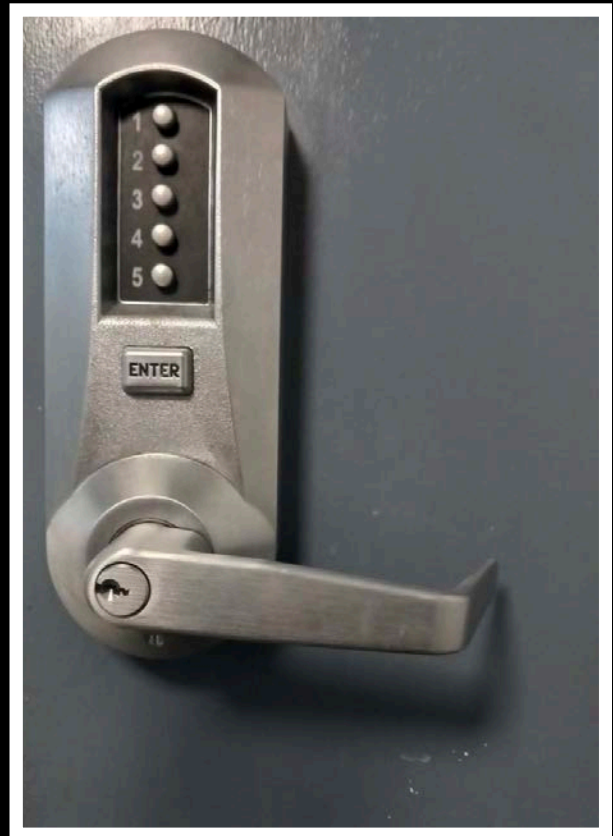
There are three kinds of doors I might encounter backstage.

The first has a digital code lock. This code will be given to me upon my arrival.



The second is manual code lock. This code will also be given to me upon my arrival. I should write these down as they will lock every time the door closes behind me.

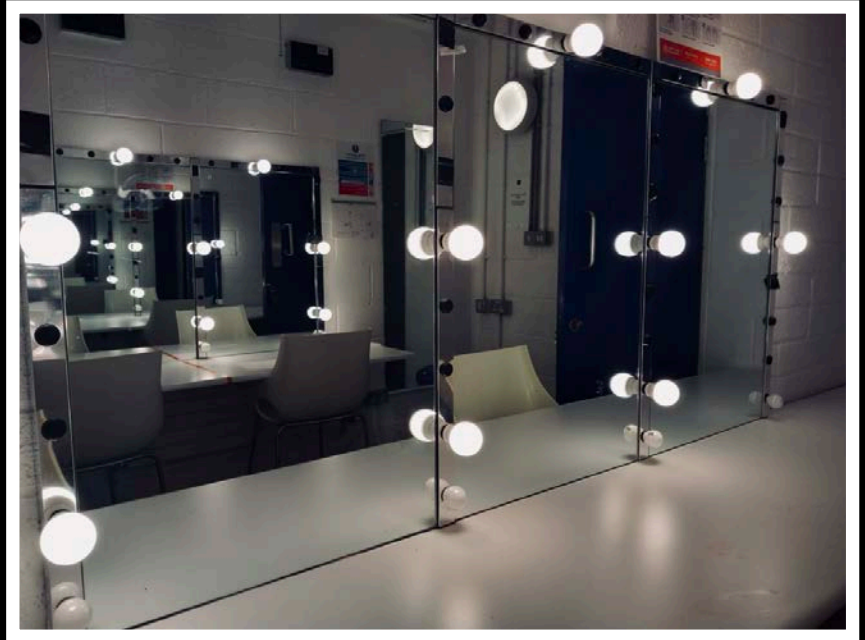
The third kind of door is a key lock. I will be given access to these doors by the staff.



PAGE 2

GROUND FLOOR DRESSING ROOMS 1 AND 2

The ground floor dressing rooms are wheelchair accessible. I can be given a tour of the backstage area before my event.

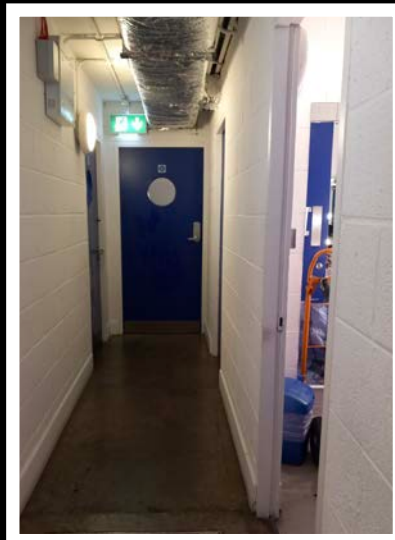


THE JOURNEY FROM THE FRONT DOOR:

There are 30 steps from the front door to the accessible toilets & backstage area. The ground surface is level. I will travel past the box office area to the right corner of the foyer. I will have to key in a code at the door or ask a member of staff to let me in.



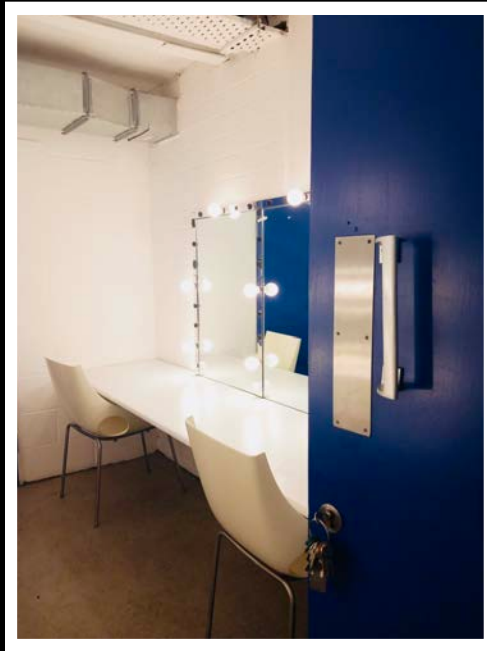
There is a second door that I will need a code for, 5 steps after the first door. The sign on this door says 'Staff Only'. This will lead me to a corridor where I will find dressing rooms 1 & 2. I will see the numbers on the doors. If I need anything else in my dressing room, I can ask staff for assistance.



PAGE 3

INSIDE THE DRESSING ROOMS:

The dressing room is opened with a key once I arrive and will be left unlocked for the duration of my stay. My belongings will be safe as long as the security doors are closed.



Inside the dressing rooms I will find 2 counters, 4 chairs (which can be removed for wheelchair access if necessary), 5 mirrors with make up lights, a costume rail with hangers, water jugs and glasses.



Both dressing rooms have bathrooms with a sink, toilet and shower. The accessible bathroom is in dressing room 2.



PAGE 4

THE JOURNEY FROM THE GROUND FLOOR DRESSING ROOMS TO THE CUBE:

There are two ways I can get to the Cube from the ground floor dressing rooms. I can go through the scene dock or through the lower foyer.

When I exit my dressing room, there is an uncoded door that leads to the Cube scene dock. There is a lot of equipment stored in this room and I need to let staff know if I require an access route. A door from the scene dock leads right into the Cube. The ground surface is level.

The second route is through the lower foyer. I will have to go back through the two doors I came through. I will need to press a release button for the doors. This button is at eye level when standing. This image shows the lower foyer door to the Cube.



PAGE 5

THE JOURNEY FROM THE GROUND FLOOR DRESSING ROOMS TO THE SPACE UPSTAIRS:

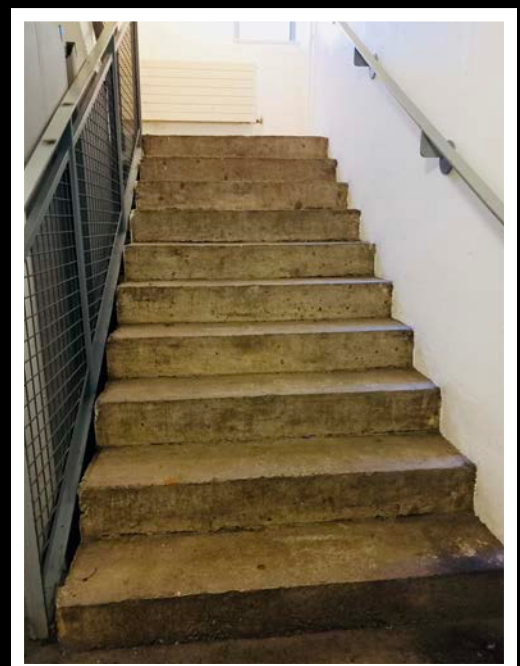
There are two ways I can get to the Space Upstairs from the ground floor dressing rooms. I can go via the lift in the lower foyer. Or via the back stairwell.



If I need wheelchair access I can take the lift. I will need to press the release buttons on the two security doors to get to the foyer. I take the lift to the first floor and it leaves me in front of the public entrance to the Space Upstairs. I can wait until the audience is seated or I can set myself backstage. The floor surface is level. There are no accessible toilets on this level.



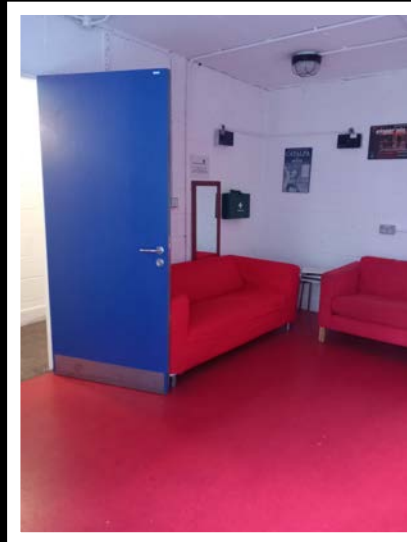
Alternatively I can take the back stairwell. Each block of stairs has 10 steps with a landing at the top. If I require a rest area, I can ask for a chair to be placed on the landing. There are four blocks of stairs up to the performance space. The stairs are concrete and evenly spaced. There is signage posted to tell me where to go along the way.



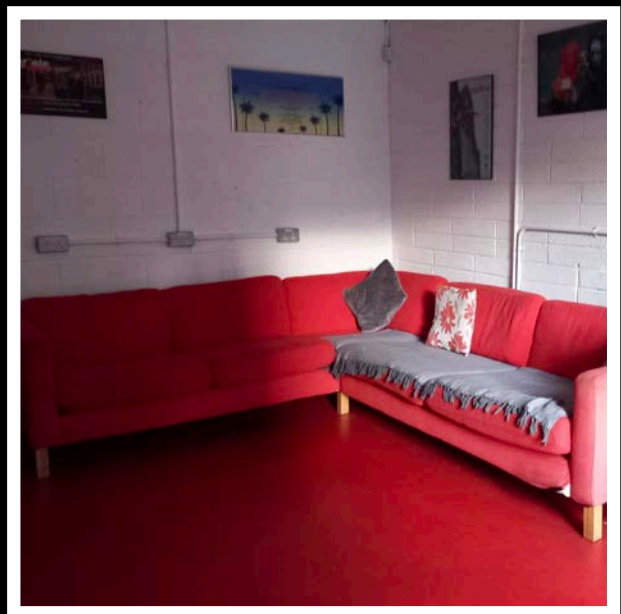
PAGE 6

THE GREEN ROOM:

The green room is located on the mezzanine level. The mezzanine level is between the ground floor and the first floor. I can only reach it from back stage. It is not wheelchair accessible.

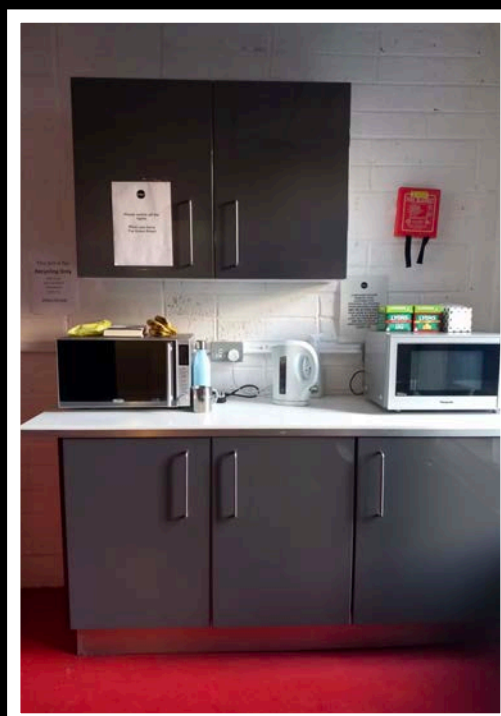


The green room is a space where I can prepare and rest when I am not needed on stage. There are comfortable couches in an L shape. The couches are low.



The green room also has a small kitchen where I can heat food, and make tea and coffee. There is a small square table with two chairs.

I must clean up after myself so that it is available for everyone else to use.



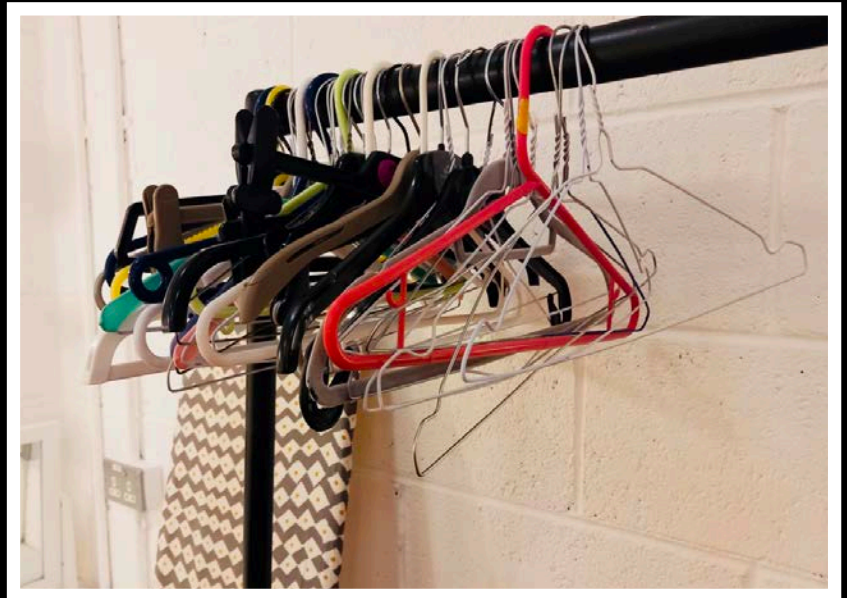
PAGE 7

UPSTAIRS DRESSING ROOMS:

The upstairs dressing rooms (3&4) are located on the mezzanine level. I will find them beside the Green Room. They are not wheelchair accessible.

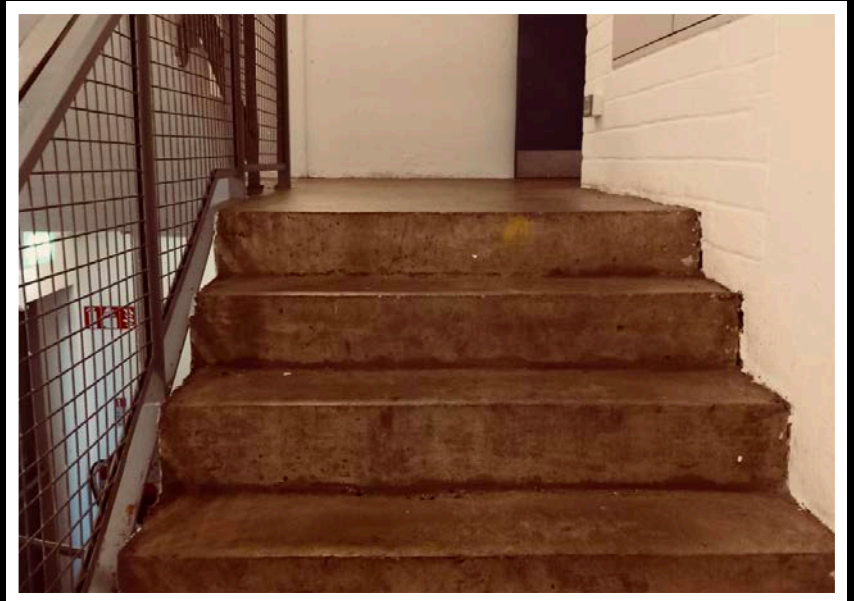


I will need a key to open the dressing rooms. Each dressing room has six to eight chairs, 8 mirrors, an ironing board, costume rails with hangers, water jugs and glasses and 2 bathrooms with a toilet, sink and shower.



**JOURNEY FROM THE
MEZZANINE LEVEL TO SPACE
UPSTAIRS (auditorium):**

To get to the Space upstairs from the mezzanine level I must travel up two flights of stairs. There are 10 steps in each flight. Once I reach the first floor, I will be guided by signage to turn right towards the stage. I will need to open two doors to reach the stage. One of the doors will need a code.



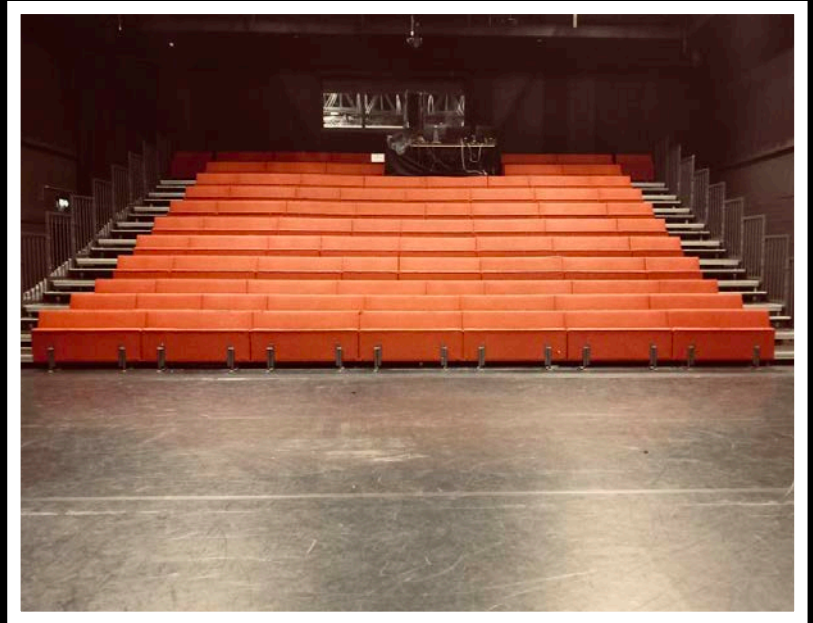
Depending on the set for the show I am involved with, there will be one or two areas backstage. The first will contain lighting and other equipment, but can be made wheelchair accessible. The second area (the wings) is behind a curtain. There is a small ramp leading up to the stage.



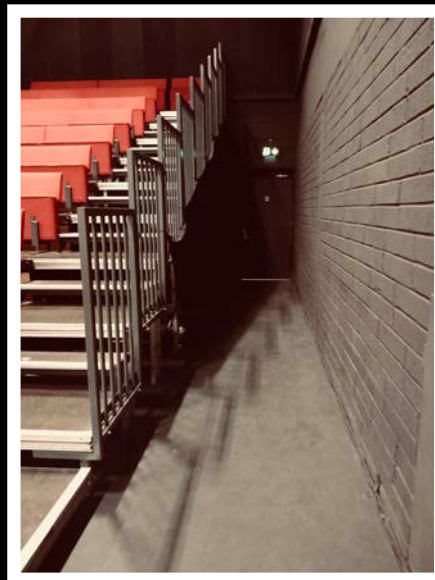
PAGE 9

I AM ON THE STAGE:

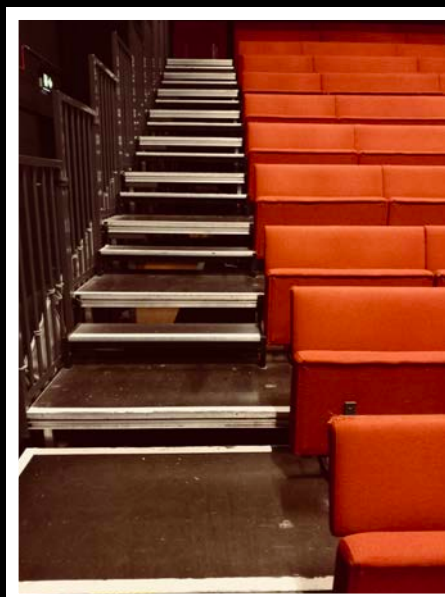
Once I am on the stage there are several points I can enter and exit. This image shows the view from the perspective of a performer.



To the right of the seating bank, performers can be hidden, there is also a door that leads to the first floor toilets. These toilets are not wheelchair accessible. To the left of this seating bank I will find the main entrance/ exit for the audience. This leads to the bar and upper foyer.



The seating bank has 18 platform steps. The auditorium has a capacity of 180 patrons. If I have people coming to my show who need wheelchair access, I can ask that seats be removed to accommodate them.





We welcome your feedback. If there is anything else you would like to know or see in this document. Please don't hesitate to contact our Project Potential Coordinator at cathy@projectartscentre.ie

