

# SOCIAL NARRATIVE PROJECT ARTS CENTRE

I am going to Project Arts Centre in Temple Bar, Dublin.

This is what I can expect when I arrive.



This is Project Arts Centre. It is a big blue building in Temple Bar, in Dublin City. Inside the building there is a Gallery, a Performance Space and an Artist Development Space.

The main reception area is on the ground floor. The bar and social area are on the first floor. Social spaces are still closed due to Covid 19. There are toilet facilities on both floors. There is a lift and a staircase.

The friendly staff at the reception desk can help me with access requirements. Or I can contact the Project Potential Coordinator at [cathy@projectartscentre.ie](mailto:cathy@projectartscentre.ie) in advance of my visit.

I can phone the box office or book online for tickets.

Phone 01 881 9604

[www.projectartscentre.ie](http://www.projectartscentre.ie)

## 1 | THE WAY IN

This is the front door where I will enter the building. The door is open at 11am from Monday to Saturday. Closing times change according what is on.

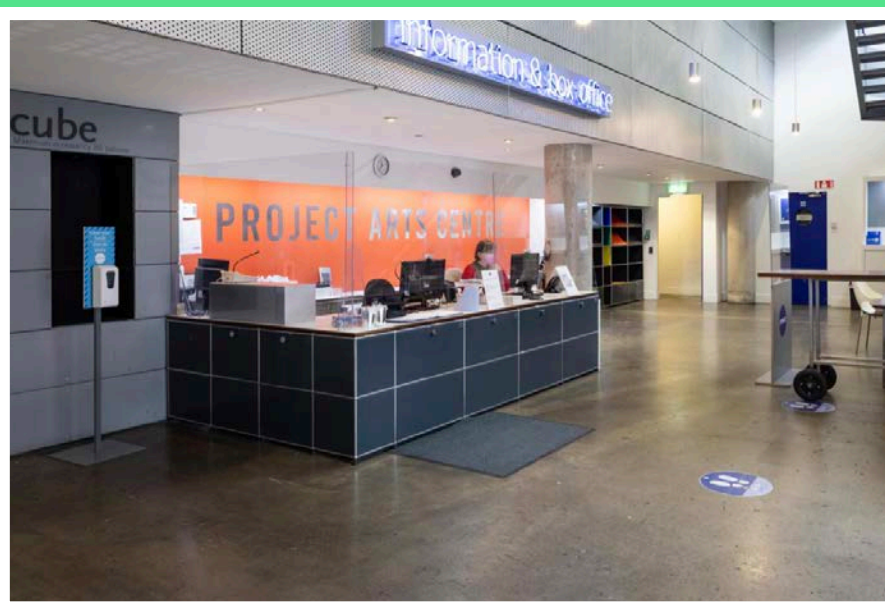


I can press the button on the left side of the door to open it. The door will close automatically behind me. Sometimes the door will already be open.



## 2 | GROUND FLOOR RECEPTION

I am now in the building foyer. It is a big open space. In front of me is the reception desk. The staff behind the desk will help me with my ticket or any questions that I have about my visit.





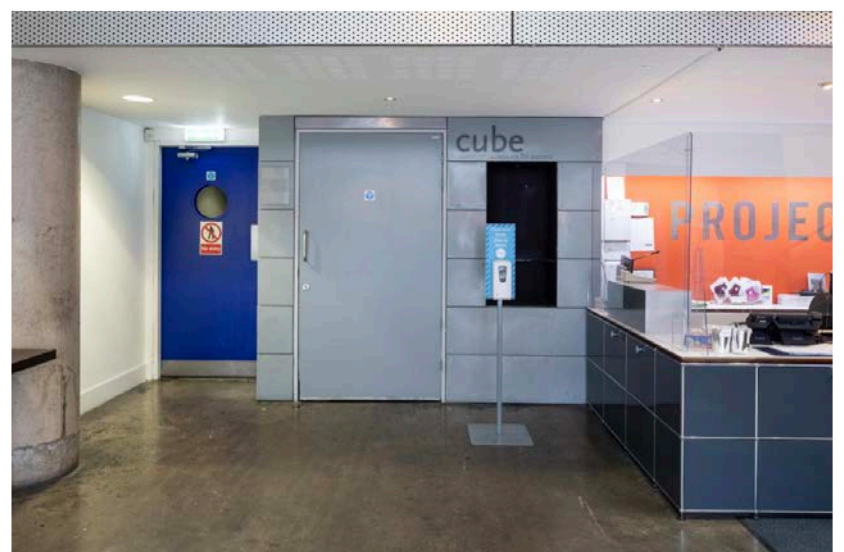
### 3 | COVID

Covid 19 is still very active in the community. I can use hand sanitizer when I enter the building to help keep myself and others safe.

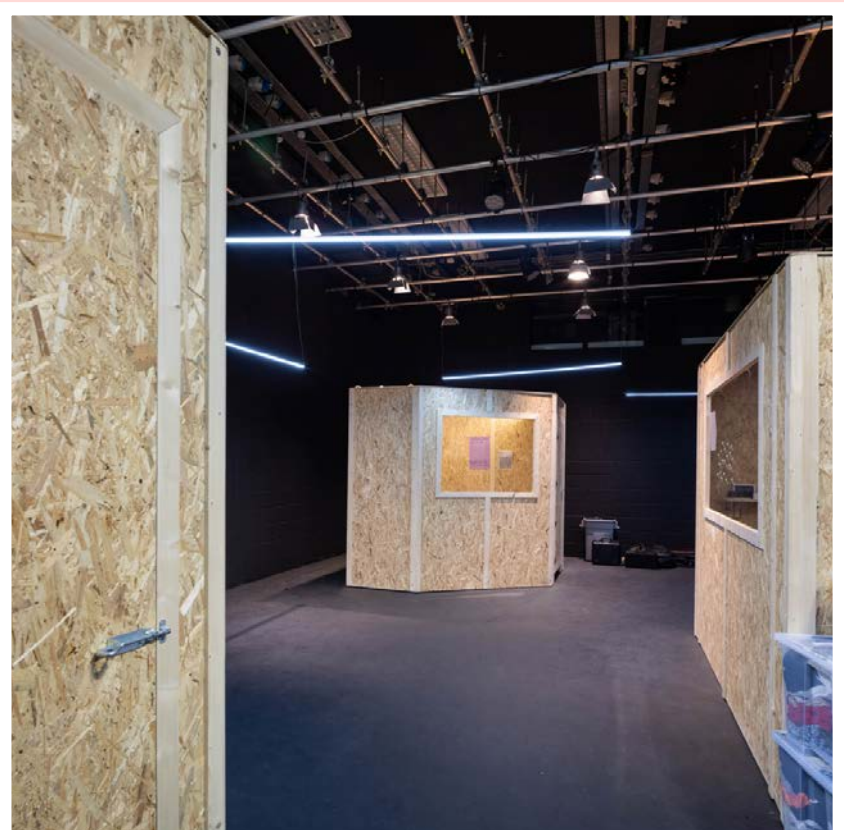


### 4 | THE CUBE

The Cube space is on the left side of the reception desk. It has a grey door. The Cube is an artist development and performance space. Sometimes it's open to the public and sometimes it's not.



This is an image of inside the Cube space during Autumn 2021. There are artists working inside the pods.



## 5 | GALLERY

The main Gallery space is to the left of the front door. There are two big white doors leading into the gallery. The art work in the gallery will change approximately every two months. Sometimes the art work is delicate, so I have to be careful.



This is an image of inside the main Gallery space. The work is by an artist called Emma Wolf-Haugh. The title of the work is *Domestic Optimism*.



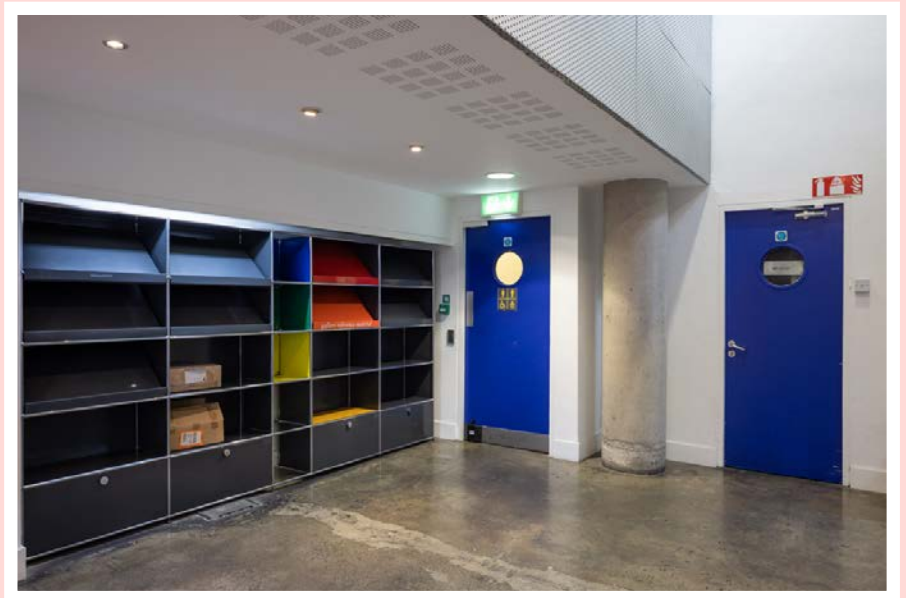
This is an image of Sara Greavu. She is the Visual Arts Curator. If I find the work confusing I can ask for more information. If I want to be shown around I can ask for a tour.





## 6 | TOILETS

The ground floor toilets are on the right of the reception desk. I will need a code to open the door. The staff at the reception desk can help me with this. If I am attending the Gallery, bathrooms will be available. The Front of House staff will be able to direct me.



The toilets are gender inclusive. That means that anyone in the building can use them, however there are still urinals in one of these toilets.



There are also changing facilities and accessible toilets.

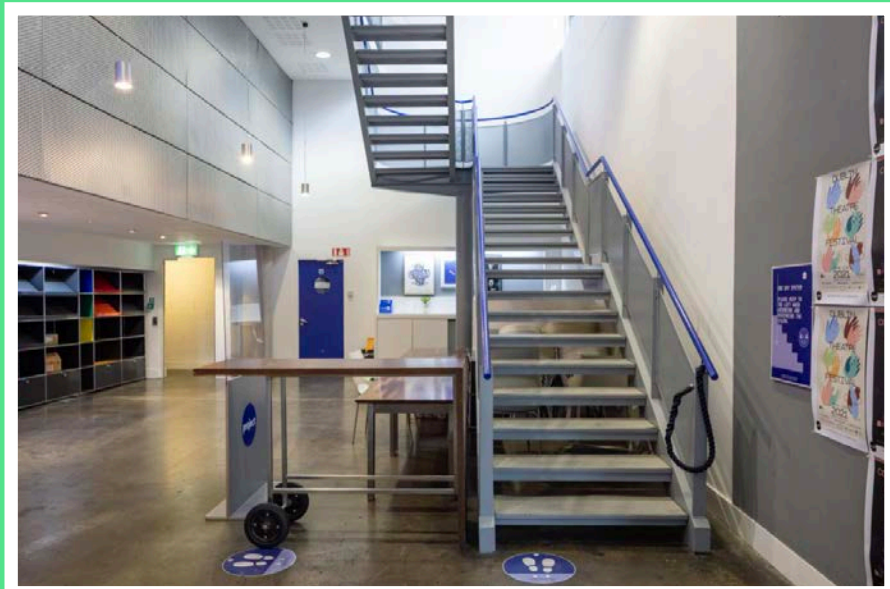


## 7 | THE LIFT AND THE STAIRCASE

The lift that brings me to the first floor is beside the entrance to the gallery.



Alternatively, I can use the staircase, which is on my right as I enter the building. There are 28 steps in total. There is a platform halfway up if I need to rest.



## 8 | FIRST FLOOR SOCIAL SPACE

If I use the staircase I will arrive at the first floor social area. There will be seating on both sides of me. If I use the lift, I will arrive in the middle of the social area, with the bar to my left and the Space Upstairs (performance space) in front of me.





## 9 | THE SPACE UPSTAIRS

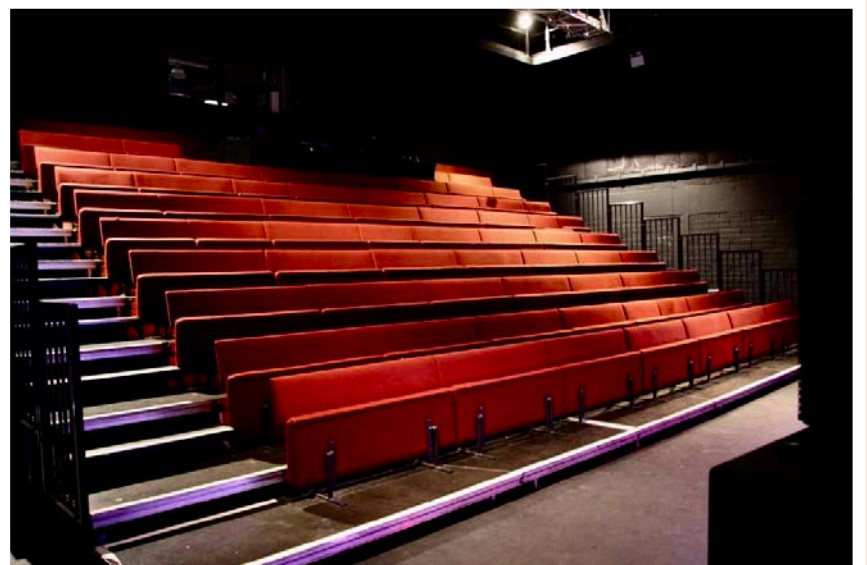
I can see theatre, dance, music, opera, installation, and sometimes I can see workshops and play readings in this space. The work changes regularly.



There will be someone waiting at the performance space to scan my e-ticket. My e-ticket will be sent to my email account before the performance, so I can have it ready on my phone.

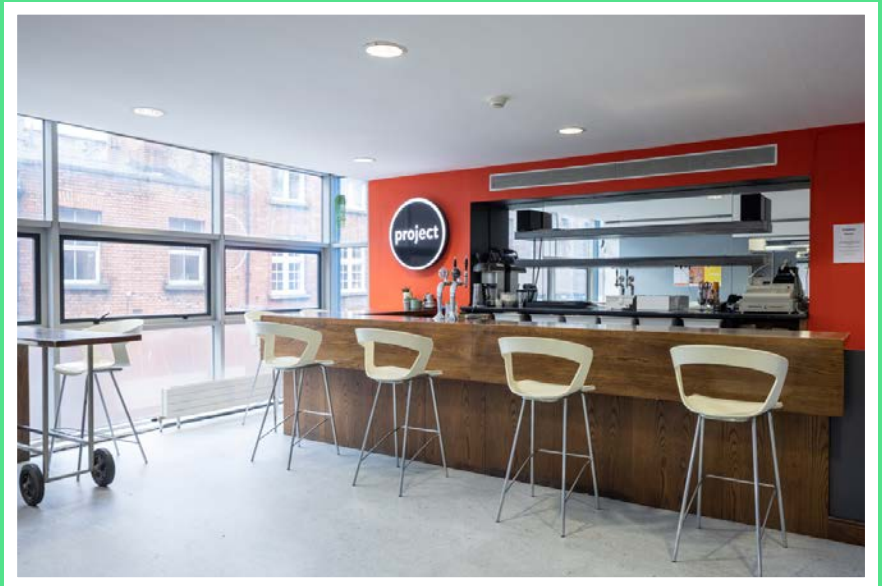


Once I am inside the space I will be shown to my seat. If I need to use the toilet in the middle of the show I will not be allowed back into the space. Sometimes we have relaxed performances. I can see a list of accessible performances [HERE](#). If I have specific access requirements I need to let the [box office](#) or [Cathy](#) know before I arrive.



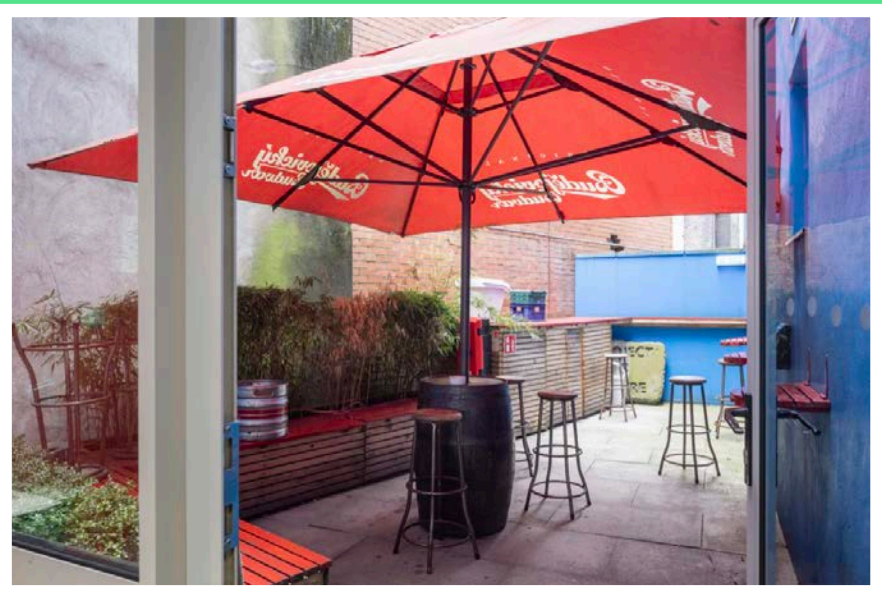
## 10 | BAR

The Project Bar is still closed at the moment. When it opens up again, I will see it announced on the website.



## 11 | OUTDOOR SPACE

There is a small outdoor space to the right of the bar. There are benches and high stools to sit down. This is a smoking area when the bar is open to the public.



## 12 | FIRST FLOOR TOILETS

If I'm going to a performance I can use the toilets on the first floor. The toilets on the first floor are down a short corridor, to the left of the auditorium. I do not need a code to use these toilets. These toilets are separated by gender binary terms. Which means that there is one for people who identify as male and one for people who identify as female.





### 13 | STAFF

This is an image of Cian O'Brien. He is the Artistic Director/CEO of Project Arts Centre.



This is an image of Orla Moloney. She is Executive Director of Project Arts Centre.



This is an image of Sara Greavu. She is the Visual Arts Curator at Project Arts Centre.





We welcome your feedback. If there is anything else you would like to know or see in this document. Please don't hesitate to contact our Project Potential Coordinator at [cathy@projectartscentre.ie](mailto:cathy@projectartscentre.ie)

